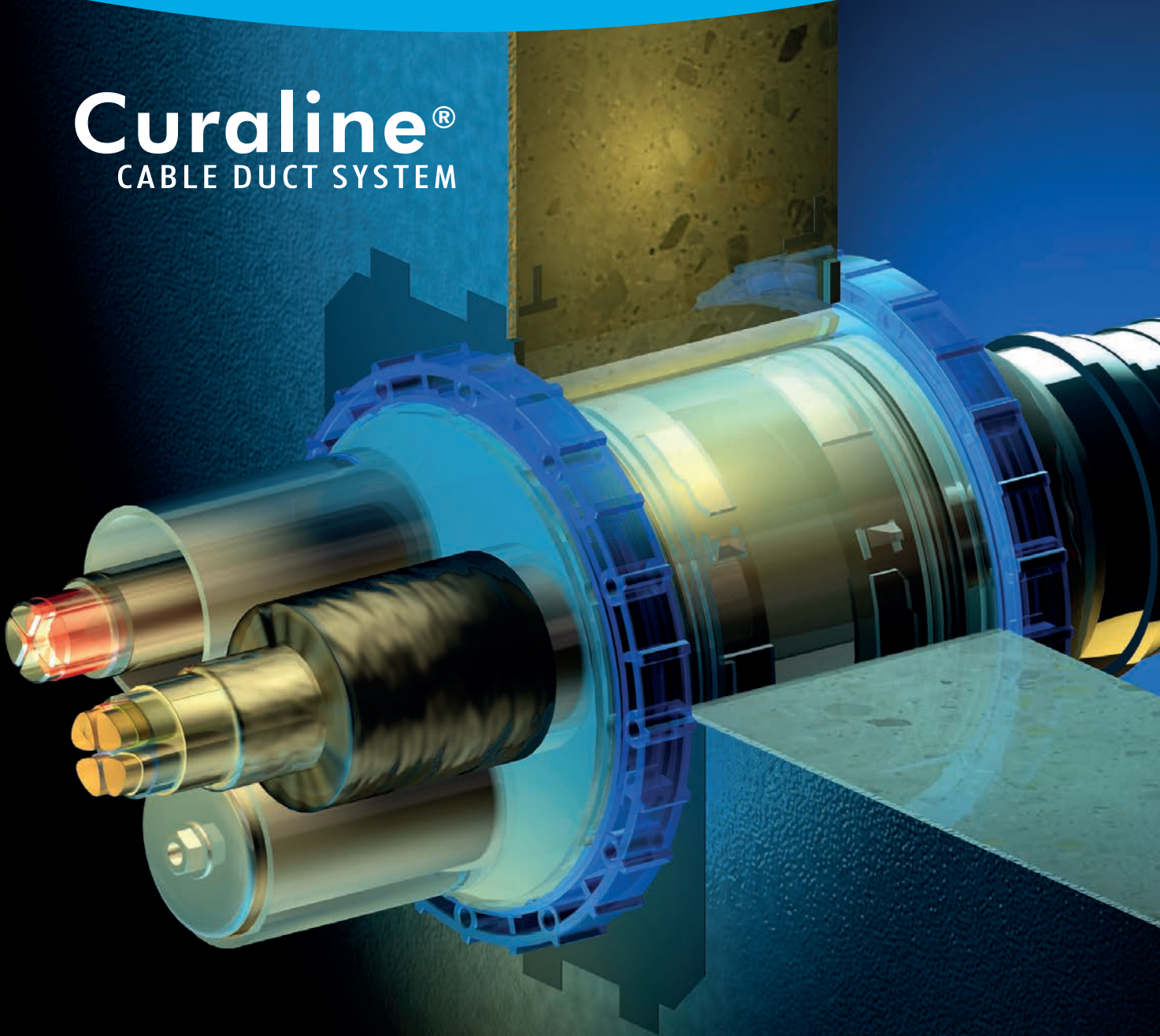




# Curaline®

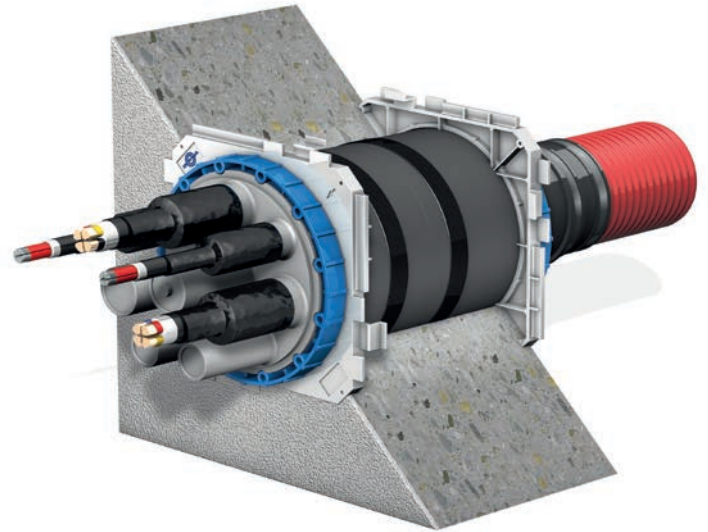
CABLE DUCT SYSTEM



**CLICK - IT'S  
TIGHT!**

# Curaline® BKD 90 and BKD150 cable duct systems

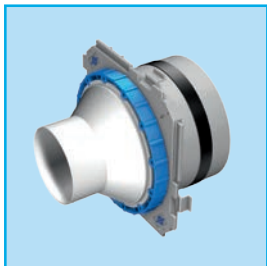
- The system for the quickest, simplest gas- and watertight seal for cables with a bayonet action lock.
- The BKD system comprises:
  - Sleeves with flanges, which are cast in and securely held by the integral wall anchors.
  - Various system caps, with 1, 3 or 8 spigots connected with a simple bayonet twist-action lock.
  - Sealing by either cold seal or heat shrinking sleeves
  - Blind plugs facilitating subsequent retro-fitting of additional cable runs
  - Cable ducts enabling straightforward completion of the entire cable installation
- All cable types and sizes can be readily and flexibly sealed. All edges are rounded to protect cable insulation and avoid damage as the cable is pulled through.
- The sleeves, with a flange on one or both ends, either individually or as a multiple battery, are set flush in the shuttering and cast in. They are delivered to site in the length to suit the wall thickness, complete with protective film and sleeve protection plug to ensure that inner surfaces are kept clean during on-going construction works. The sleeve protection plugs are **gas- and watertight** as soon as they are cast in.



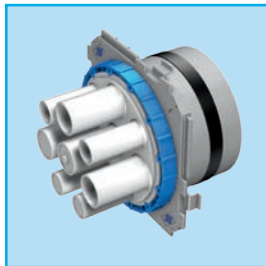
BKD 150 system with bayonet action lock



BKD 90 system with bayonet action lock



System cap with single spigot



System cap with eight spigots, of which four are open and four are closed, ready for later, retrofit installation.

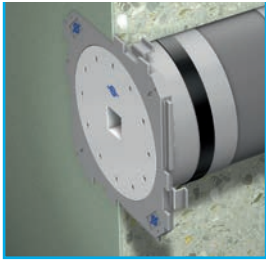
# Curaline® KD 110 cable duct system

- The cable duct system with the proven gas and waterproof screw cap has the same optimal opportunities and solutions as the BKD system.
- Tools, such as system and square key, can be used for both the BKD and KD system.

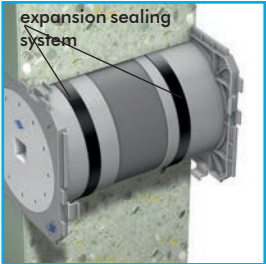


Curaline® KD 110 system with screw cap

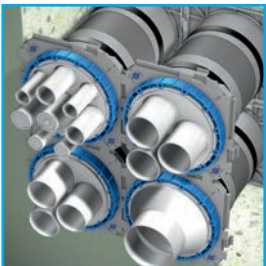
## The advantages of Curaline® system



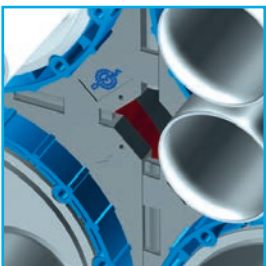
The sleeve protection plug provides immediate protection - gas- and water-tight, even against pressing water.



The expansion sealing system and the seal packing ensure a secure connection to concrete.



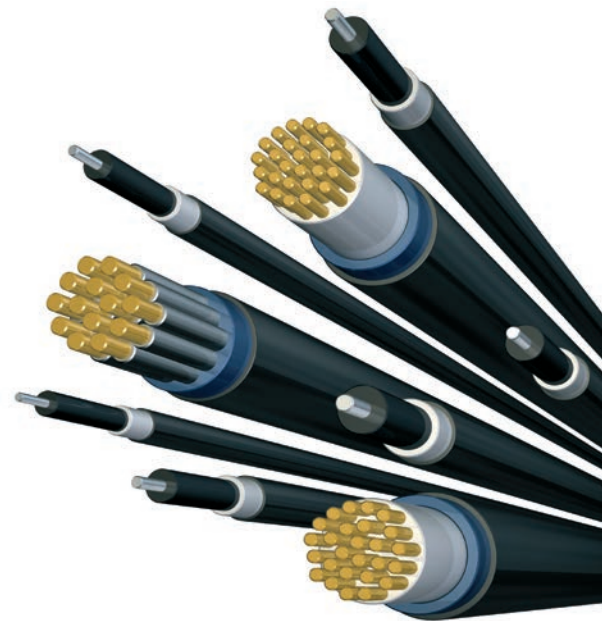
Several sleeves with flanges can be assembled together in batteries when a multiplicity of cables is to be ducted.



The chamfered corners of the packings provide total control of the concrete compaction in the field of cable ducts.

## The advantages at a glance

- Universal ducting possibilities for all cables and cable ducts
- Sealing using shrink sleeve and rubber compression technology
- Immediate gas- and water tight
- Secure and user-friendly connection of cable protection systems
- Comprehensive range of heat shrink and cold seal shrouds with accessories
- Integral wall anchors ensure sleeves are securely cast in
- rounded edges - to ensure cable insulation is not damaged as cables are pulled through
- Environmentally friendly and highly chemical resistant materials
- Damage to the cable insulation over its entire length is avoided

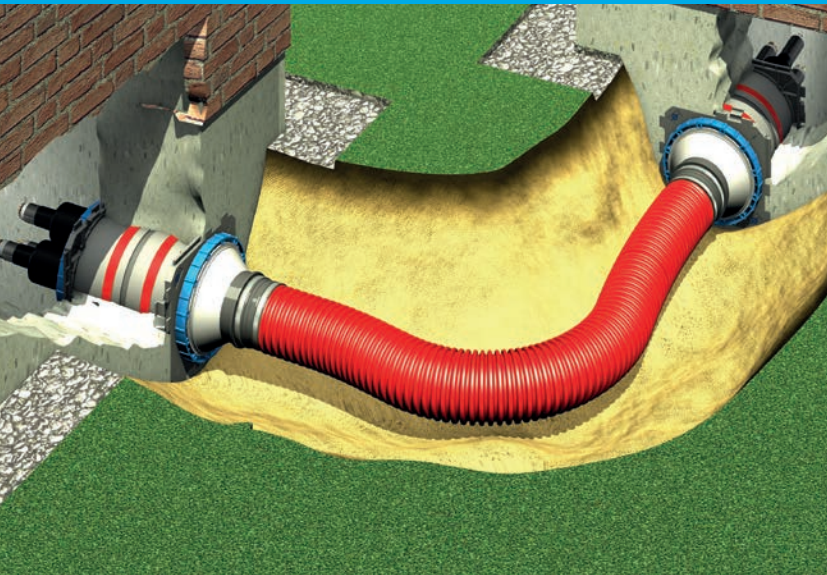


Dimensions Curaline® BKD 150 / BKD 90 / KD 110

cable duct system	N° of spigot	Inside Ø [mm]	Cable-Ø [mm]
Curaline® BKD 150	1	110	34 - 108
	3	59	21 - 56
	8*1	4 x 25 4 x 35	7 - 23 12 - 33
Curaline® BKD 90	1	75	26 - 73
	3	30	12 - 28
	5	20	7 - 18
Curaline® KD 110	1	80	26 - 78
	1	100	26 - 98
	3	46	16 - 44
	7*2	4 x 25 3 x 32	7 - 23 12 - 30

\*1) The package includes 4 thermal shrink sleeves included (2 x cable 7-23 mm + 2 x cable for 12-33 mm).

\*2) Supplied with 6 thermal shrink sleeves included (3 x cable 7-23 mm + 3 x cable for 12-33 mm).



## The KSS-System: The advantages

- Reliable sealing
- Direction change achievable immediately on exit from the building
- Systems tailor-made for each project
- Compatible with all standard cable ducts
- Cables protected against building settlement and ground movement
- Gas- and water tight connection of cable ducts and earth cables
- Alterations to cable installations do not require expensive ground works
- Duct systems can be cast in without problem

## The KSS Duct system

A flexible, mechanically strong, load-bearing spiral duct, which is connected to the sleeve flange using either the bayonet or the screw thread system. The KSS duct enables a gas- and watertight connection between two buildings to be completed without problem.

For special constructions feel free to contact us. Our engineers will find a suitable solution for your application.

### Dimensions of Curaline® KSS systems

System	Inside Ø [mm]	bending radius	wall thickness
KSS B150	150 mm	994 mm	7,8 mm
KSS 110	110 mm	730 mm	5,8 mm
KSS B90	80 mm	540 mm	5,0 mm



**DOYMA GmbH & Co**  
SEALING SYSTEMS  
FIRE PROTECTION SYSTEMS

Industriestr. 43-57  
28876 Oyten

**Fon** +49 (0) 42 07/91 66-550  
**Fax** +49 (0) 42 07/91 66-199

[www.doyma.de](http://www.doyma.de)  
[info@doyma.de](mailto:info@doyma.de)

**DOYMA GmbH & Co**  
SEALING SYSTEMS  
FIRE PROTECTION SYSTEMS  
Vienna Office

Perfektastr. 61 Objekt 3/Top 2  
1230 Vienna

**Fon** +43 (0)1/6 98 13 88  
**Fax** +43 (0)1/6 98 13 88-99

[www.doyma.at](http://www.doyma.at)  
[info@doyma.at](mailto:info@doyma.at)

